



දෙවන වාර පරීක්ෂණය - 2025
Second Term Test - 2025

Grade 08

WESTERN MUSIC





02 Hours

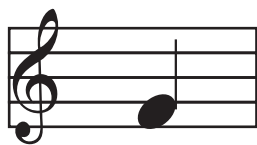
Name / Index No. :

Answer all questions on this paper itself.

UNDERLINE THE CORRECT ANSWER.

01. What is the value of the 2nd dot of the given note (♩.)
- (1) Count (2) 1/2 Count (3) 1/4 Count (4) 1/8 Count
02. Name the note lies between the lines of the Treble and Bass Staves ?
- (1) A (2) E (3) M.C (4) C
03. In which Religion does not use music in their Worship?
- (1) Buddhism (2) Hinduisam
(3) Christianity (4) Islam
04. Which Section has the most number of Instruments in the Symphony Orchestra ?
- (1) Percussion (2) Brass-Wind
(3) String (4) wood-Wind
05. Select the Correct order of Plucked, Struck, Shake & Blowing Instruments?
- (1) Guitar, Drum, Castanets, Recorder (2) Cymbal, piano. Recorder, Triangle
(3) Drum, Flute, Timpani, Recorder (4) melodica, Triangle, piano, Drum
06. 'Submediant' lies between,
- (1) Tonic and Supertonic (2) Subdominant and mediant
(3) leading note and Tonic (4) Dominant and leading note
07. Which Songs are came from Generation to Generation ?
- (1) Prashasthi (2) Folk Songs (3) Raga (4) Vannam
08. Whose Compositions Including 'K' numbers ?
- (1) Haydn (2) Schubert (3) Schumann (4) Mozart
09. What are the lines drawn Vertically which divide music into Equal measures ?
- (1) Bar lines (2) leger lines
(3) Double bar lines (4) Stave

10. What Includes the History, Traditions and the Beauty of the Country?
- (1) Folk Songs (2) School Anthem
(3) National Anthem (4) Vannam
11. Which denotes the upper tetra chord of A^b major?
- (1) $E F^b G^b A$ (2) $E^b F^b G^b A^b$
(3) $E^b F G A^b$ (4) $E F G A$
12. What is equal to 6 Quavers?
- (1)  (2)  (3)  (4) 
13. What is the main Instrument used for the Singing of 'Prashasthi'?
- (1) Udekkiya (2) Rabana (3) Geta Bera (4) Daula
14. Which Bird is the most musical of the Garden Birds?
- (1) Magpie Robin (2) Shama (3) Koel (4) kaha kurulla
15. Who Composed 'Choral Symphony'?
- (1) Haydn (2) Mozart (3) Beethoven (4) Bach
16. What uses to play the 'Guitar'?
- (1) Reed (2) Pick (3) Bow (4) Slide
17. English meaning for 'ff' es,
- (1) Very loud (2) Very Soft (3) Very Slow (4) Very Fast
18. Trio' means,
- (1) 2 players (2) 3 players (3) 2 performers (4) 1 player
19. Select the 'Improvised Instrument'?
- (1) Bass Drum (2) Side Drum
(3) Aluminum plate cymbal (4) Flute
20. If this note transposed an Octave higher what will be the new note?



- (1) In the 4th space in Treble clef (2) On the 5th line in Treble clef
(3) In the 4th space in Bass clef (4) On the 5th line in Bass clef

- Answer only 3 questions including the first question.

01. Answer the following questions based on the passage.

Gypsy Dance Haydn

Allegro ma non troppo

5

9

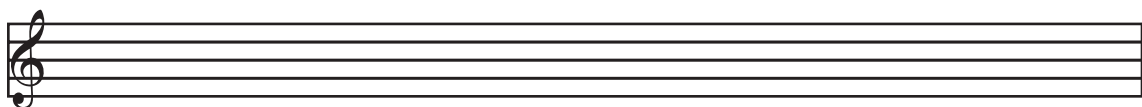
13

- (i) Circle a major Tonic triad?
- (ii) Write the full name of the Composer?
- (iii) Name a Contemporary composer?
- (iv) What is the key of this piece?
- (v) Write the name of this piece?
- (vi) What are the Dots above the notes in Bar '3'?
- (vii) What does 'mf' means?
- (viii) Name the Interval marked (*)
- (ix) Circle the Highest pitch note and marked it as 'H'?
- (x) Circle the lowest pitch note and marked it as 'L'?

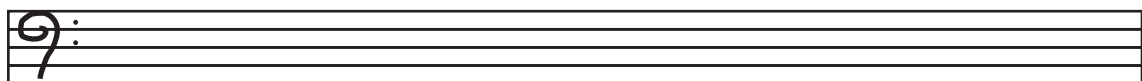
(10 marks)

02 Write the following scales.

(a) A major ascending in Treble clef, with out key - Signature. (3 marks)



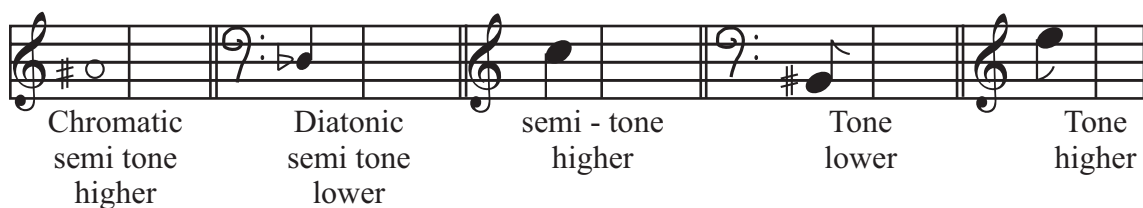
(b) D^b major ascending and descending in Bass clef, with key - Signature. (3 marks)



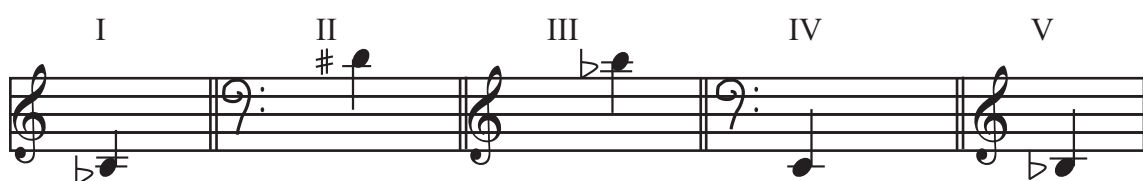
(c) Write the key - signatures of the following. (4 marks)



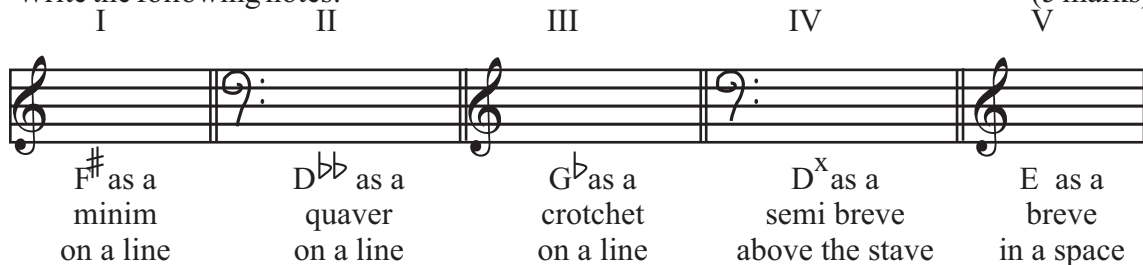
03. (a) Write the following notes. (5 marks)



(b) Name the following notes. (5 marks)



04. (a) Write the following notes. (5 marks)



(b) Name the following intervals. (5 marks)



(1 x 6 marks)

The first staff of music is written on a five-line staff with a treble clef. It contains six measures. The first measure has a quarter note on G4. The second measure has a quarter note on A4. The third measure has a quarter note on B4. The fourth measure has a quarter note on G4. The fifth measure has a quarter note on F#4. The sixth measure has a quarter note on E4.

The first staff of music is written on a five-line staff with a treble clef. It contains the following notes: G4 (quarter), A4 (quarter), B4 (quarter), C5 (quarter), D5 (quarter), E5 (quarter), F#5 (quarter), and G5 (half). The notes are connected by a single horizontal line, indicating they are part of a continuous melodic phrase.

The first staff of music is written on a five-line treble clef. It begins with a C-clef on the first line. The first measure contains three eighth notes: C4 (first line), D4 (second line), and E4 (third line), with a crescendo hairpin above them. The second measure contains a half note F4 (third space) preceded by a fermata. The third measure contains a half note G4 (fourth space) preceded by a fermata. The fourth measure contains a dotted half note A4 (fifth line) preceded by a fermata. The staff ends with a double bar line.

The first staff of music is written on a five-line staff with a treble clef. It contains two measures. The first measure has a quarter note on G4, an eighth note on A4, a quarter note on B4, and a quarter note on C5. The second measure has a quarter note on B4, a quarter note on A4, a quarter note on G4, and a quarter note on F#4. The staff ends with a double bar line.

(2x2 marks)

(i) 

9:3	
4	

Paper - I

01. (3) 02. (3) 03. (4) 04. (3) 05. (1) 06. (4) 07. (2) 08. (4) 09. (1) 10. (3)
 11. (3) 12. (1) 13. (1) 14. (1) 15. (3) 16. (2) 17. (1) 18. (2) 19. (3) 20. (2)

(1 x 20 = 20)

Paper - II

01. (i)
 (ix)
 (x)

Gypsy Dance Haydn

Allegro ma non troppo

- | | |
|-------------------------|-------------------------------|
| (ii) Franz Joseph Haydn | (iii) Mozart |
| (iv) C minor. | (v) Gypsy Dance. |
| (vi) Staccato dots. | (vii) Moderately / Half loud. |
| (viii) Minor 3rd | |

- 02 (i)

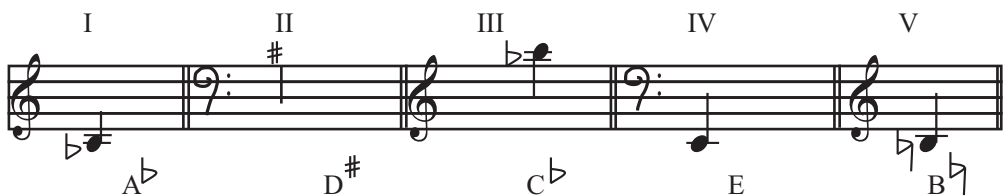
(4 marks)

- (ii)

(4 marks)

(c)  (4 marks)

03. (a)  (5 marks)

(b)  (5 marks)

04. (a)  (5 marks)

(b)  (5 marks)

05. (a) (i) 3
4
(ii) 3
4
(iii) 4
4
(iv) 2
4
(v) 3
8
(vi) 4
4

(b) (i) 
(ii) 