



**විසම් පළාත් අධ්‍යාපන දෙපාර්තමේන්තුව**

**Provincial Department of Education - NWP**

**දෙවන වාර පරීක්ෂණය - 2025**  
**Second Term Test - 2025**

**Grade 07**

**INFORMATION AND COMMUNICATION TECHNOLOGY**

**1 ½ Hours**

**Name / Index No. :**

**PART - I**

- **Answer all questions.**
- **Underline the correct answer for the questions 1 to 10.**

(01) Which is considered as the brain of the computer?

- (1) Monitor (2) Central Processing Unit  
(3) Mouse (4) Microprocessors

(02) The electronic technology used to produce 3<sup>rd</sup> generation computer is,

- (1) Transistors (2) Vacuum Tubes  
(3) IC - Integrated Circuits (4) Microprocessors

(03) Which is controlling the computer system,

- (1) Arithmetic and Logical Unit (2) Control Unit  
(3) Memory Register (4) Vacuum Tubes

(04) The operation system used in mobile phones is,

- (1) Windows (2) MacOS (3) Android (4) Ubuntu

(05) A solid state storage device is,

- (1) Hard disk (2) Compact disk  
(3) Pen drive (4) Magnetic tape

(06) Which of the following is not a computer hardware that can be seen from the outside,

- (1) Mouse (2) Monitor  
(3) Hard disk (4) Keyboard

(07) The command to save a file is,

- (1) open (2) save (3) new (4) print

(08) Not a type of malware,

(1) Trojan Horse

(2) Computer virus

(3) Ubuntu

(4) Computer worms

(09) When the instructions in an algorithm are executed one after another in a sequential order from top to bottom, it is called,

(1) Sequence

(2) Controller

(3) Selection

(4) Repetition

(10) The key used to type the word "banana" in capital letters is,

(1) Capslock

(2) Delete

(3) Enter

(4) Backspace

(2 x 10 = 20 marks)

● **If the following statements are true, put a (✓) mark and if those are false put a (✗) mark.**

(11) Transistor is used in first generation computers. (.....)

(12) Touch typing is the act of typing quickly and accurately without looking at the keyboard. (.....)

(13) Biometric passwords are used for mobile phones. (.....)

(14) Hard disk is an optical media. (.....)

(15) A folder can contain one or more files. (.....)

(2 x 5 = 10 marks)

● **Choose the answer from part 'B' that matches part 'A'.**

**'A'**

**'B'**

(16) The speed of the central processing unit is measured by

Wordstar

(17) A magnetic media device

fuse

(18) An operating system used for computers

hertz

(19) The first word processing software

ubuntu

(20) Can minimize damage to the computer due to

hard disk

sudden flow of high voltage current

## PART - II

● **Answer all the questions.**

(01) (i) Identify the following flow chart symbols and match them.



(2 x 5 = 10 marks)

(ii) Write input, process and output for calculating the area of a rectangle.

- (a) Input        :- .....
- (b) Process    :- .....
- (c) Output      :- .....

(2 x 3 = 06 marks)

(iii) A file stored in the computer by Saman is shown in below.



Name A and B parts of above file.

- A    :- .....
- B    :- .....

(2 x 2 = 04 marks)

(02) (i) Write the electronic technology used in each of the following generation choosing from the brackets.

- (a) First generation    :- .....
- (b) Second generation   :- .....
- (c) Third generation    :- .....
- (d) Fourth generation   :- .....

(Integrated circuits, Vacuum tubes, Microprocessor, transistor)

(1.5 x 4 = 06 marks)

(ii) Name two operating systems used in computers.

.....

.....

(2 x 2 = 04 marks)

(iii) Write two advantages of using word processing software.

.....

.....

(3 x 2 = 06 marks)

(iv) Name two software programs that can be used for word processing.

.....

.....

(2 x 2 = 04 marks)

(03) (i) Classify the following storage devices.

[CD, Hard Disk, DVD, Memory Card, Pen drive, Magnetic tape]

Optical Media Devices	Magnetic Media Devices	Solid State Media Devices

(2 x 6 = 12 marks)

(ii) Write two hardware components that can be seen in the system unit.

.....

.....

(2 x 2 = 4 marks)

(iii) Write two ways in which computer hardware can be damaged.

.....

.....

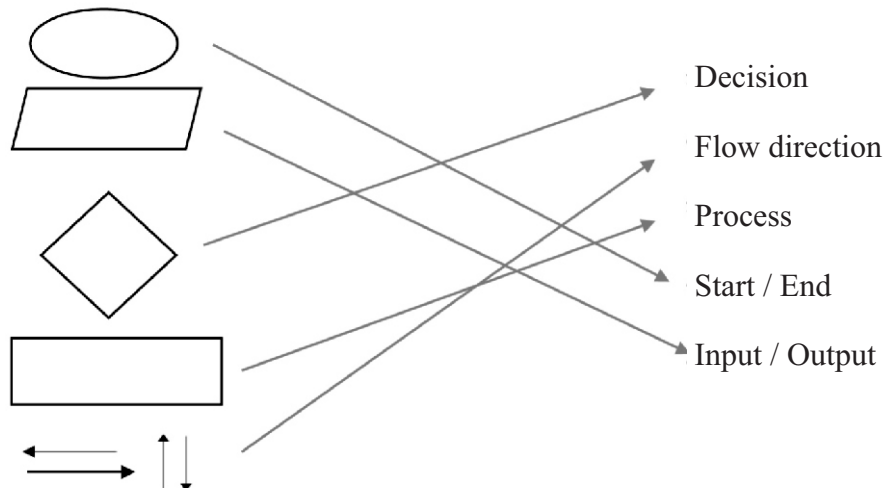
(2 x 2 = 4 marks)

**Answer Paper (Part I)**

- |            |                |             |               |           |               |
|------------|----------------|-------------|---------------|-----------|---------------|
| (01) 2     | (02) 3         | (03) 2      | (04) 3        | (05) 3    |               |
| (06) 3     | (07) 2         | (08) 3      | (09) 1        | (10) 1    | (2 x 10 = 20) |
| (11) (✗)   | (12) (✓)       | (13) (✓)    | (14) (✗)      | (15) (✓)  | (2 x 5 = 10)  |
| (16) hertz | (17) hard disk | (18) ubuntu | (19) Wordstar | (20) fuse | (2 x 5 = 10)  |

**(Part II)**

(01) (i)



(2 x 5 = 10)

- (ii) (a) input :- length and width  
 (b) process :- length X width  
 (c) output :- Area (2 x 3 = 06)
- (iii) A :- File name      B :- file extension (2 x 2 = 04)

- (02) (i) (a) First generation :- Vacuum tubes  
 (b) Second generation :- transistors  
 (c) Third generation :- integrated circuits  
 (d) fourth generation :- micro processor (1.5 x 4 = 06)
- (ii) Windows, Ubuntu, MS DOS, Mac OS, Fedora (2 x 2 = 04)
- (iii) Creating documents, printing documents (3 x 2 = 06)
- (iv) Microsoft office word, iWork pages, Open office writer, Word perfect (2 x 2 = 04)

(03) (i)

Optical Media Devices	Magnetic Media Devices	Solid State Media Devices
CD	Hard disk	Memory card
DVD	Magnetic tape	Pen drive

(2 x 6 = 12)

- (ii) Mother board, Cooling fan (2 x 2 = 4)
- (iii) Sudden power failure, receiving high voltage current or receiving an excessive electric current (2 x 2 = 4)