



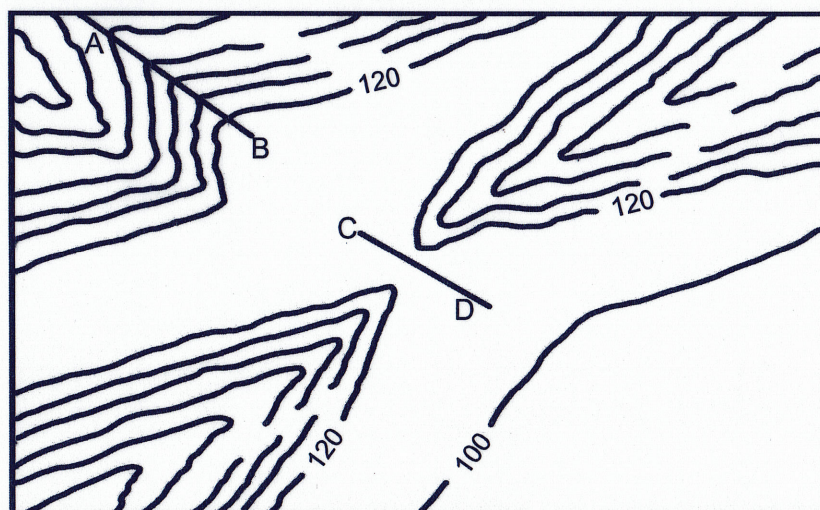


- **Underline the most suitable answer for question no 16 to 20**
  - Rocky in composition                      • Composed of silicate and metal materials
16. Which space object in the solar system does the above statement refer to?  
 1. Outer planets                      2. Inner planets                      3. Dwarf planets                      4. Sub planets
17. Choose the answer that shows two correct statements about the planet Jupiter  
 A - Has a high gravitational force                      B - The largest planet in the solar system.  
 C - Rotates from east to west                      D - Has a bright system of rings.  
 1. A & C                      2. B & C                      3. A & B                      4. C & D
18. What is an ecosystem with a high level of bio diversity in a coastal landscape ?  
 1. Freshwater marshes                      2. Freshwater reservoirs  
 3. Rivers                      4. Mangroves
19. Which of the following is the answer to the two main economics activities in the rural landscape of Sri Lanka.  
 1. Fishing industry & forestry                      2. Agriculture & forestry  
 3. Agriculture & fishing industry.                      4. Plantation agriculture & forestry.
20. The correct statements regarding the Tarai valley in Nepal is,  
 1. It is a frozen region                      2. It has a warm climate.  
 3. Abundance of species of plants and animals                      4. There are many job opportunities related to tourism.

## **PART - II**

- **First question is compulsory.**
- **Select four more questions.**
- **The total number of questions to be answered is five.**

(01)A. Use the following map given to answer the questions given below.

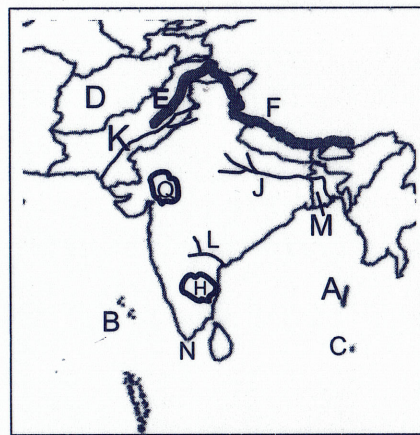


Use correct convectional symbols & colours.

- Indicated the values of contour lines. (2 marks)
- Colour the areas above 180 m in brown colour. (2 marks)
- Name the features shown by A-B and C-D in the map respectively. (2 marks)
- Draw an A graded main road in between the mountain range and the 100 m contour line. (2 marks)
- Draw the provincial boundary to the South of the 100 m contour line. The boundary must be located within the 100 m contour line. (2 marks)



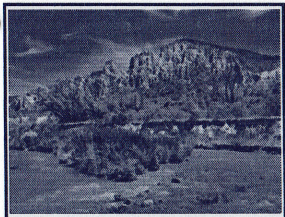


- B. i. Which letter denotes an island belongs to India?  
 ii. Letter D shows a central asian country which obtained the membership of SAARC. Name that country.  
 iii. Name the mountain range shown by letter E  
 iv. Name the mountain range that live tribal groups like Bhutia and Khasa  
 v. Which letter denotes the sacred river of Hindu devotees.  
 vi. Which letter represents the country with a famous marshy land in South Asia.  
 vii. Which letter denotes a region that can be seen Oasis.  
 viii. Name the point shown by letter N. (8 marks)



- (02)i. Write two differences between stars and planets. (2 marks)  
 ii. a) How many natural satellites belong to the main planets?  
 b) Name the natural satellite of the earth.  
 c) Write 2 features of natural satellites. (04 marks)  
 iii. a) Name the leader of the solar system.  
 b) Write 2 characteristics of the leader of the solar system. (05 marks)

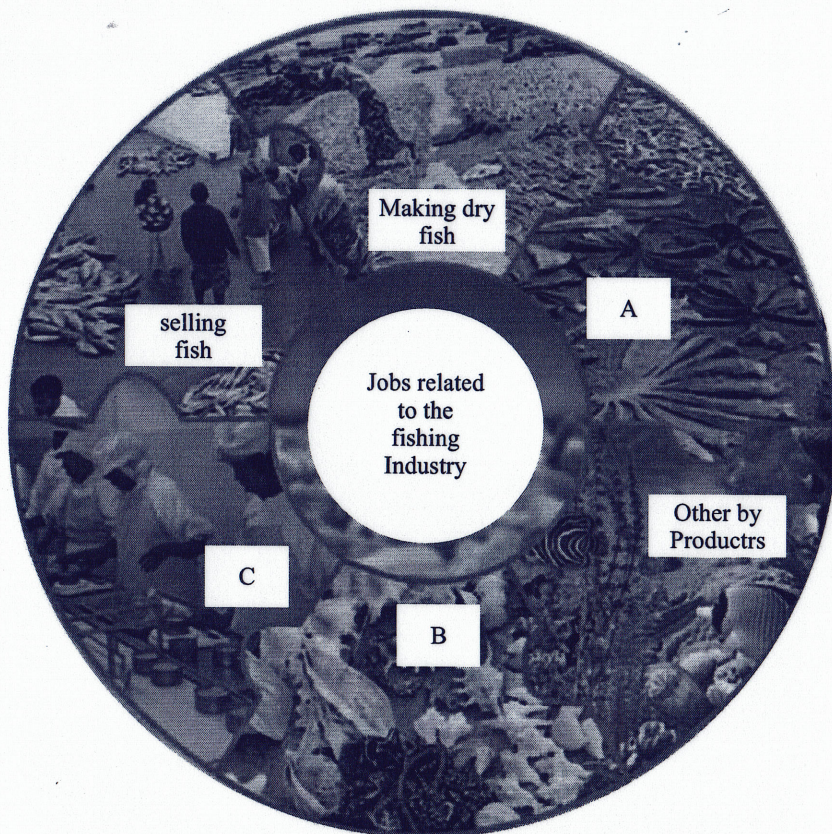
- (03)i. Some information about the earth is given below. Write the answers suitable for the blanks shown by letter A and B respectively. (2 marks)

Rotation period	Speed of the rotation (in the equator)	Revolution period	Speed of the revolution
A	0.46 km per second	365 days 06 hours	B

- ii. Write 2 factors affected for the Earth to become a habitat for living beings (2 marks)  
 iii. a) Describe what is meant by the rotation of the earth.  
 b) Write the respective name denoted by following latitudes  $23\frac{1}{2}^{\circ}$   
 i. Southern latitude  $23\frac{1}{2}^{\circ}$   
 ii. Northern latitude  $66\frac{1}{2}^{\circ}$   
 c) Calculate the time at following longitudes by assuming the Greenwich time as 8.30 a.m.  
 i. Eastern longitude  $82^{\circ}$   
 ii. Western longitude  $35^{\circ}$  (05 marks)  
 (04)i. Write the names of the equinoxes on 21<sup>st</sup> of March and 23<sup>rd</sup> of September due to the revolution of the Earth, respectively. (02 marks)  
 ii. Name the seasons shown by A, B and C pictures respectively. (02 marks)  
 a)  b)  c)   
 iii. a) Write two features of the season shown by letter A  
 b) Write 2 human activities cause water pollution.  
 c) Write 2 harmful results suffer by man due to air pollution. (6 marks)



- (05)I. Write the specific location of South Asia (2 marks)
- ii. Answer the following questions based on your knowledge about South Asia.
- Name the countries that have the highest and the lowest population in South Asia respectively.
  - Write 2 island states belong to South Asia.
  - Write 2 reasons to consider South Asia as an exceptional geographical region. (6 marks)
- (06)i. Write 2 characteristics of the coastal landscape. (2 marks)
- ii. Following diagram shows the human activities associated with fishing industry. Write the answers suitable for A, B and C respectively. (3 marks)



- Write 2 reasons affected for the development of tourist industry in Maldives.
  - Write 2 job opportunities created as a result of tourist industry in Sri Lanka.
  - Write 2 activities you can do in order to protect the coastal landscape. (6 marks)
- (07)i. Name the two landscapes distributed in South Asia shown by letter A and B (2 marks)



A



B

- Write a region in South Asia where A landscape can be found.
  - Write 2 features of that landscape (3 marks)
- Write 2 features of the B landscape
  - Write 2 regions in South Asia where B landscape can be found.
  - Write 2 problems created in the landscape B (6 marks)



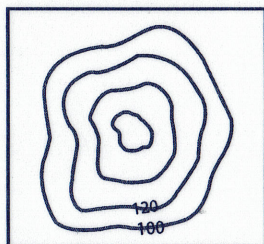
(08)i. Write one physical and cultural feature seen in maps respectively.

(2 marks)

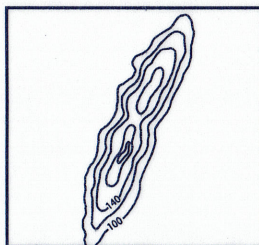
ii. Name the features shown below.

(3 marks)

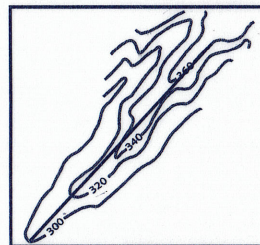
A



B



C



iii. a) Write 2 features of contour lines.

b) Name the features available in 1:50000 topographical maps shown below.



Red Colour



Red Colour

c) Draw how the following features are represented in 1:50000 topographical maps using correct conventional symbols and colours.

i. Railway and railway station

ii. Tank and Irrigation canal

(6 marks)

\* \* \* \*



**Geography**  
**Grade - 08 - Answers**

- |              |                                |
|--------------|--------------------------------|
| 1 - 150      | 11 - Planets                   |
| 2 - Neptune  | 12 - Sun & moon / Solar system |
| 3 - Pluto    | 13 - Gravitational pull        |
| 4 - Valley   | 14 - Chennai / Madras          |
| 5 - Tropical | 15 - Contour line              |
| 6 - C        | 16 - 2                         |
| 7 - C        | 17 - 3                         |
| 8 - W        | 18 - 4                         |
| 9 - W        | 19 - 2                         |
| 10 - C       | 20 - 1                         |

**PART - II**

- (01)A. i. 2 marks for indicating the contour value from 140 m upwards from 20 m intervals.  
 ii. There are 3 regions over 180 m. 2 marks for colour them in brown.  
 iii. A-B - Valley C-D - Gap ( 2 m)  
 iv. The road with correct convectional symbol and should be drawn in between the mountain range and 100 m contour line.  
 v. Provincial boundary should be drawn +.+ in red colour and it should be drawn to the south of the 100 m contour line.
- B. i. B ii. Afganistan iii. Sulaiman range iv. C v. J vi. M vii. Q viii. Cape Comorin
- (02) i. Stars Planets  
 Emit heat & light - Do not emit light  
 Twinkling objects - Reflects the sunlight  
 - Seen with a monotonous light (2m)
- ii. a) 173 b) Moon  
 c) - Celestial objects that orbits around the main planets.  
 - Smaller than the main planets. (2 m)
- iii. a) The sun  
 b) - The temperature of the center of the sun is about 15 million °C  
 - The surface temperature is about 6000°C  
 - It holds 99.86% of the total mass of the solar system.  
 - Its extent is 109 times of the diameter of the earth.  
 - It is a source of energy and it provides energy and heat to all the planets in the solar system.  
 - Solar storms occur on the surface of the Sun.  
 - The sun revolves around its own axis. The time taken for one rotation is 25 4 earth days.
- (03) i. A - 23 hours and 56 minutes  
 B - 29.8 km for a second (2m)  
 ii. - presence of atmosphere with favourable gases as well as water vapour congenial to living beings.  
 - Existence of water - Prevalence of an intermediate temperature  
 - Occurrence of rotation and revolution. - Existence of gravitational force (2m)  
 iii. a) Movement of the earth around its own axis.  
 b) i. Tropic of Capricorn ii. Arctic circle  
 c) i. 2.38 p.m ii. 6.10 a.m
- (04) i. 21st of March - Spring Equinox  
 23rd of September - Autumn Equinox (2 m)  
 ii. A - Spring B- Winter C - Autumn (2m)  
 iii. a) Spring  
 - The temperature rises up gradually - snow and ice begin to melt  
 - Tender leaves appear on dormant trees. - flowers will start to bloom. - Trees bear fruits.  
 b) - Addition of industrial waste - Leaking of oil due to transportation  
 - Addition of waste from cities. - Addition of waste from livestock farming  
 - Nuclear experiments (2 m)



- c) - Destruction to the ozone layer. - Increase global warming
- Melting of glaciers - extreme weather conditions
- changes in the rainfall pattern. - Changes in the global wind circulation.

(05) i. 38° Northern latitudes from the equator and 60° E to 100° Eastern longitudes (2m)

ii. a) Mount Everest b) Valley c) Bay of Bengal

iii. a) Highest - India Lowest - Maldives

b) Nicobar , Andaman

- c) - Location of extremely cold regions and extremely hot regions.
- Location of highly elevated areas as well as lowlands like sunderbans marsh
- Location of dense forests as well as grasslands etc. (2m)

(06) i. Sand bars, lagoons, bays, points, coral , reefs, mangroves (2m)

ii. a - Making Maldives fish b - sea shells and ornaments c - Production of canned fish

iii. a) - Natural harbours comprised of well protected lagoons and isolated islands.

- Shallow sea with coral reefs - Bio diversity in the coastal belt

- Sandy beaches with scenic beauty - Hotel facilities that draw tourist attraction clear water

- many places of sun basking etc. (2m)

b) - Jobs in hotel - Tourist guides - Sale of fancy items

- Ayurvedic center - Trade - Jobs in harbours (2m)

- c) - Do not pollute the coastline
- Community awareness on the importance of the protection of the coastline
- Art exhibitions etc.

(07) i. A - Desert landscape B - Industrial and urban landscape (2m)

ii. a) A - Thar desert

b) - Land with widely spread sand planes - High temperature

- Annual average rainfall less than 250mm - High evaporation

- Dry winds due to high temperature. - Low moisture in soil etc. (2m)

iii. a) Mumbai, Delhi , Chennai , kolkata, Islamabad, karachchi, Colombo (1m)

b) - very large population is concentrated in a very limited area.

- Growth of industries and services.

- High density of houses and vertical developments of buildings.

- Emergence of settlements of less facilities , built without a plan. (2m)

c) -High diurnal movement of people - Scarcity of land - Traffic congestion

- Abundance of low income settlements - Increasing street population.

- Environmental pollution. - Increasing abusive behaviour. (2m)

(08) i. Physical - Rivers , forests, mountain ranges, valleys, spur, gaps, slopes, plains, plateaus , etc.  
Cultural - Tank, buildings, settlements, croplands etc.

ii. A - Conical hill B - Mountain range C - Spur

iii. a) - Every contour line has a specific value

- The interval between two contour lines is equal.

- Contour line interval in 1:50000 topographic maps of Sri Lanka is 20 m

b) i. School ii Hospital

c) There should be a red square with a black boarder

The tank bund is marked in brown and area of water is shown in blue. Irrigation canal is marked with a blue colour symbol