



දෙවන වාර පරීක්ෂණය - 08 ශ්‍රේණිය - 2024  
Second Term Test - Grade 08 - 2024

Science

කාලය පැය 02 යි

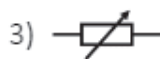
නම / විභාග අංකය:

Part I

▪ Answer all the Questions

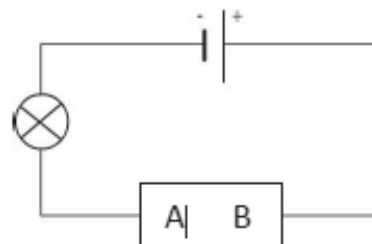
- What is a necessary ingredient for photosynthesis?
  - Oxygen Gas
  - Water
  - Chlorophyll
  - Light Energy
- It is not an adaptation in the leaves to prevent from transpiration,
  - The position of a thick wax layer
  - The leaf blade is large
  - Leaf thinning
  - Transformation of leaves into spines
- Choose the choice that contains only metals from the elements below.
  - zink, gold, iodine, aluminium
  - carbon, sulphur, iron, sodium
  - sodium, copper, zink, iron
  - zink, iron, mercury, carbon
- Among the following fuels, a solid fuel is:
  - Liquid Petroleum
  - Wax
  - Diesel
  - Kerosene
- What is the substance that shows ductility?
  - glass
  - graphite
  - clothes
  - copper
- A white chalk is placed in a sauce with blue paint. What conclusion can be taken from the observations?
  - Chalk blue coloration
  - Wetting the chalk
  - Discontinuity of solid matter
  - Diminishing of chalky whiteness and reddening
- Which of the following is a change of physical status?
  - Burning magnesium ribbon
  - Dropping an iron nail into a solution of copper sulphate
  - Liquid wax cooling
  - Dropping a strip of magnesium into dilute hydrochloric acid
- A density bottle was completely filled with drinking water and marine water and the mass was measured separately.
  - marine water is denser than drinking water
  - Drinking water is denser than marine water
  - Drinking water and marine water are equal in density
  - Drinking water and marine water mix

9. Two, small-mouthed(X) and large-mouthed(Y) cups, attached to a rubber membrane so as to produce equal stresses, are vibrated with equal force,
- The Pitch of X is high than the pitch of Y
  - The pitch of X is small than pitch of Y
  - The Pitch of X and the pitch of Y are equal
  - Another answer.
10. Which group of microbes cannot be observed by light microscopy?
- Bacteria
  - Fungi
  - Virus
  - Protozoa
11. Factors required for corrosion of iron are,
- carbon dioxide gas and carbon monoxide gas
  - carbon dioxide gas and water vapor
  - Oxygen gas and hydrogen gas
  - Oxygen gas and water
12. The human hearing range is,
- 20 Hz – 2000 Hz
  - 20 Hz – 20 kHz
  - 200 Hz – 200000 Hz
  - 200 Hz – 2000 Hz
13. If an object makes 500 vibrations in five seconds, its frequency is,
- 500 Hz
  - 100 Hz
  - 50 Hz
  - 5000 Hz
14. The melting point and boiling point of distilled water are given respectively,
- 10 °C and 100 °C
  - 10 °C and 1000 °C
  - 1 °C and 100 °C
  - 0 °C and 100 °C
15. The factors mentioned in the fire triangle are,
- Heat fuel oxygen
  - Heat Oxygen Water
  - Heat fuel water
  - Oxygen Water Heat
16. A sulfur containing compound is,
- Coper sulphate
  - Table salt
  - Lime water
  - Glucose
17. A physical property used in storing nitrogen gas in cylinders,
- Expandability
  - lighten up
  - Decrease in density
  - Compressibility
18. An example of sublimation is,
- Solidification of liquid wax
  - Evaporation of iodine
  - Steam being liquid water
  - Melting solid wax
19. The symbol of the variable resistor is shown correctly,



20. Which of the following is placed between A and B, will the bulb light?

- Pencil's graphite rod
- Piece of Maica
- PVC rod
- Piece of Nylone



## Part II

- Answer all five questions including first question and four more.
- 16 marks are given for first questions and 11 marks each for other questions.

01.

- A) The human body has been built with combination of different tissues, organs and systems, and organized to perform living functions such as food digestion, respiratory and transportation of materials.

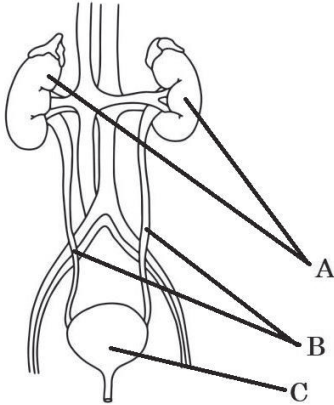


Figure 1

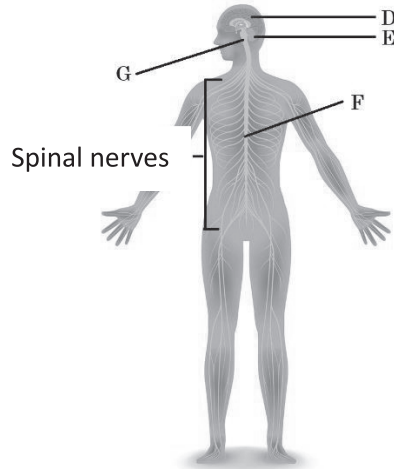


Figure 2

- 1) Call the systems shown in figures 1 and 2? (2 marks)
- 2) Name the living functions perform by above systems (2 marks)
- 3) Select the suitable letters from above diagrams that fit the following organs and write (2 marks)

organ	letter
Kidney	
Cerebrum	
Spinal cord	
Bladder	

- 4) Explain the formation of the peripheral never system based on the second diagram (2 marks)
- 5) Follows are the good health habits has been followed by a student in his daily life.
  - a. Having meals in the right time
  - b. Drinking clean water for daily
  - c. Avoiding excessive sleeping
  - d. Limiting the use of high saliva and sour

Write the letters for 2 suitable health habits for good existence of the organ shown in diagram 1 (2 marks)

- 6) Write a correct way when hospitalization that the patient who facing an accident should not harm his spinal cord. (1 mark)

B)

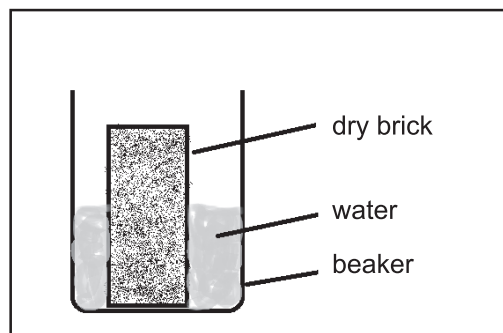
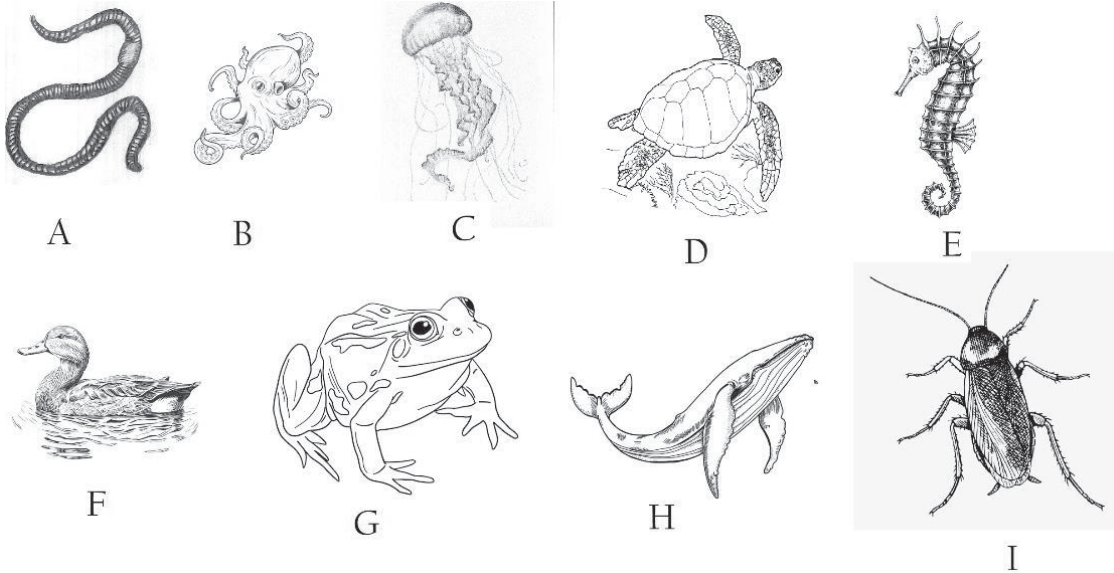


Figure 3

- 1) Sort the matter in the figure 3, according to their physical status. (1 mark)
- 2) What are observations from this activity? (2 marks)
- 3) What is the conclusion that you conclude about the nature of the solid matter from the observation of the above activity? (2 marks)

## 02.

A) Below are the diagrams of several different species of organisms. Observe well those diagrams and answer questions.



- 1) Sort above the above organisms as invertebrates and vertebrates using the characters only. (2 marks)
- 2) Write relevant letters for animals that fit the following animal categories. (1/2 × 4 = 2 marks)
  - a. Mammalia
  - b. Mollusca
  - c. Annelida
  - d. Amphibia
- 3) Name a Mammal living in water. (1 mark)
- 4) Write the name of the animal category where life in the animal world lives most. (1 mark)

B) Microorganisms are the invisible organisms to the naked eye made up of a cell or several cells. They show favorable and adverse effects.

- 1) Select and write the relevant microorganisms from B column which causes to the diseases of A column.

disease	microorganism
1) Sore	a) Virus
2) Malaria	b) Fungi
3) Dengue	c) Bacteria
4) Tuberculosis	d) Protozoa

(1/2 × 4 = 2 marks)

- 2) Microbial functionality varies by type of food. (fermentation, putrefaction, rancidity) Write the microbial functionality in front of the following food type.

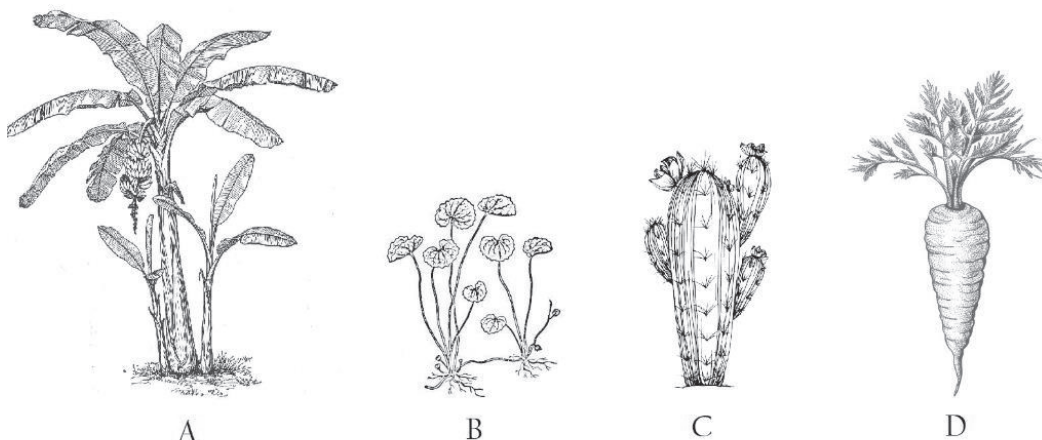
- |            |              |
|------------|--------------|
| a. "Kewum" | d. Peanuts   |
| b. Meat    | e. Fish      |
| c. "Dodol" | f. Milk rice |

(1/2 × 6 = 3 marks)



### 03.

The main reason for the beauty and wonderfulness of the environment is the variety between plants and animals. Here are some of the plants of students studying the diversity of plant parts.



1. Complete the table with the letters related to the diagrams. (1/2 × 4 = 2 marks)

Specialty of the plant part	Related letter
Propagative stem	
Storage of food in tap root	
Photosynthetic stem	
A plant with a falls stem	

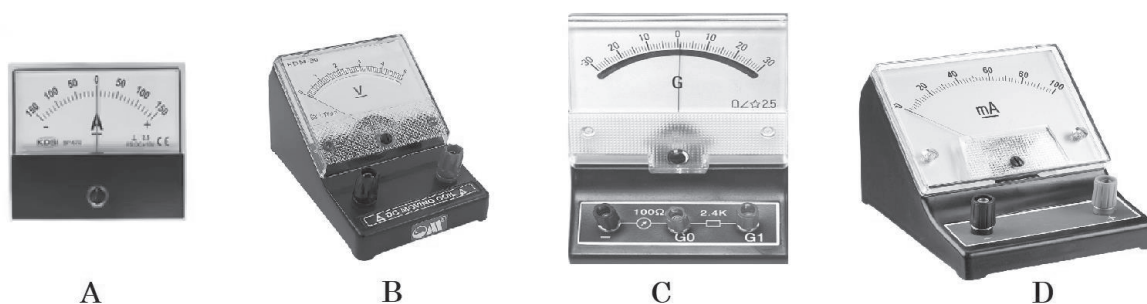
2. Write two major functions performed by the true stem of the plant A. (2 marks)
3. Select the plant which perform similar function by two columns of the table. (1/2 × 6 = 3 marks)

A	B
A. Stem of "Gotukola"	Pandanus Plant
B. Stem of cactus	"Kankun"
C. Root of carrot	Radish
D. Root of Banyan	"Rathkadol"
E. Stem of Banana	"Nawa handi"
F. Root of "mahakadol"	"Kiri ala"

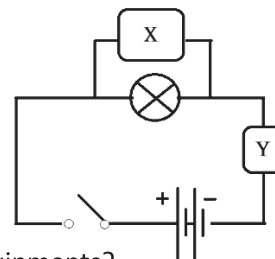
4. a) Define the transpiration? (2 marks)
- b) Write the plant which show highest and lowest transpiration, among above plants in orderly. (2 marks)

### 04.

Below are some of the equipment of measuring electricity.

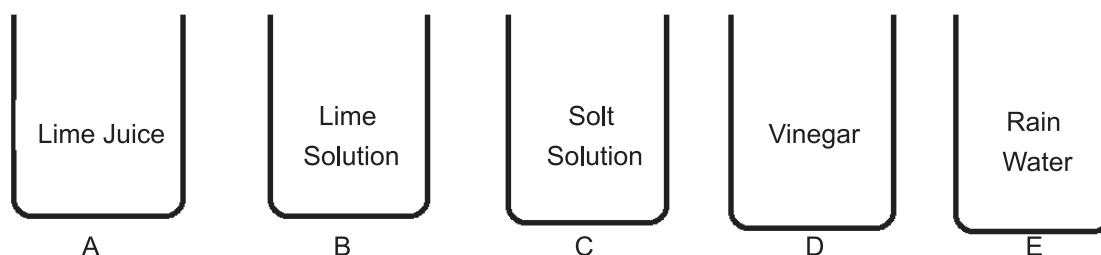


1. Indicate the above equipment in symbols. (1/2 × 4 = 2 marks)
2. Write the relevant device/devices from above for the following questions. (1/2 × 4 = 2 marks)
  - a. Measure the direction of the current
  - b. Measuring the size of the current
  - c. Measure of potential difference
  - d. Measure a small electric current
3. Select the matching equipment for places X and Y.
4. Write two things to consider when connecting the above X and Y equipments.
5. How to distinguish the positive terminals and negative terminals of the above equipments?



## 05.

Most of the chemicals use at home for varies jobs. Some of them can find from the environment around us.



1. Follow shows the color change occurs when putting litmus to above solutions. Write down the solution from above infront of the color change. (1/2 × 10 = 5 marks)

Red Litmus to Blue color	
Blue Litmus to Red color	
Blue Litmus to Blue color	
Red Litmus to Red color	

2. Why is pain decreasing after applying lime solution when a bee bites? (2 marks)
3. The following equipments are placed on a few tables in the lab. (2 marks)

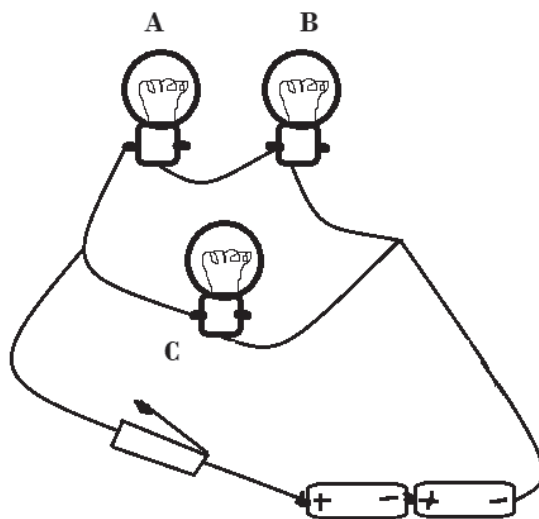
beaker water tripod bunsen burner salt <b>P</b>	dil. hydrochloric acid zink fillings boilling tube <b>Q</b>	clonical flask lead nitrate sodium chloride ignition tube thread stopper <b>R</b>	heads of wax matches boilling tube rubber balloon <b>S</b>
--	--	---	---

Among the above groups, what team/teams studied on physical changes of matter? (2 marks)

4. Draw a diagram of the R group's activity. (2 marks)

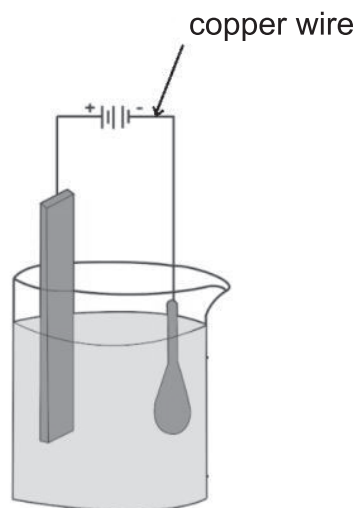
06.

A) The following is how the identical bulbs and the cells of a circuit are contacted.



- 1) Draw the circuit above from symbols? (1 mark)
- 2) What is the most illuminated bulb out of the above A, B, C bulbs? (1 mark)
- 3) What is the way to connect bulbs to light all the bulbs with the highest brightness? (1 mark)
- 4) What is the method of cells are contacted here? (1 mark)

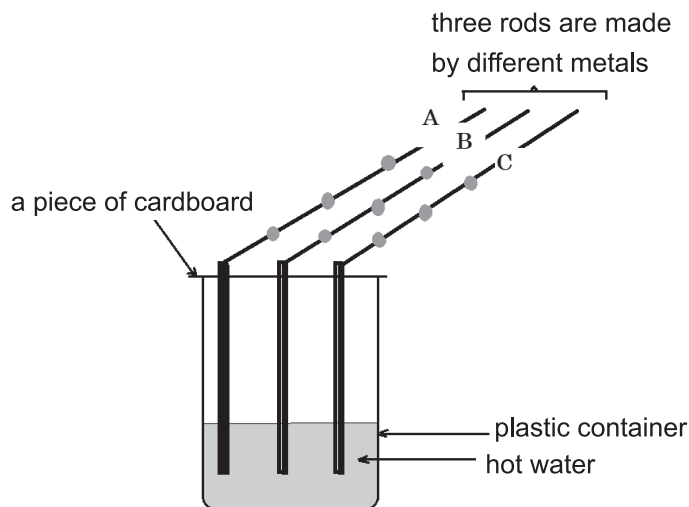
B) The picture shows the practical setup to plate the copper on an iron spoon.



- 1) What effect of the electric current does this represent? (1 mark)
- 2) Write two observations made here? (2 marks)
- 3) Write what happens when a compass is placed under the copper wire in the diagram above. (1 mark)
- 4) What is the effect of current electricity for the above observations in question 3? (1 mark)
- 5) Write two things that should be taken care of while using electrical appliances. (2 marks)

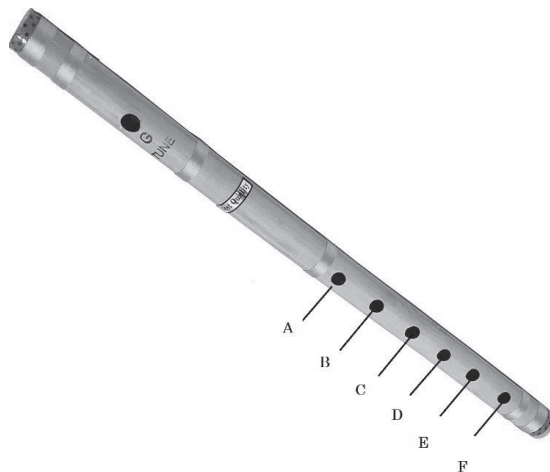
07.

A) Different substances have different physical properties. The physical properties of the substances are sufficient to separate them and identify them.



- 1) What physical property of matter does find out the above experiment model? (1 mark)
- 2) What is the observation here? (1 mark)
- 3) First melted in the drop of wax on that metal rod of A. What is your conclusion regarding this? (2 marks)
- 4) Why use a piece of cardboard? (2 marks)
- 5) Staying under sheeted roofs is difficult than under tiled roofs in warmer seasons. Explain the reason. (1 mark)

B) A flute is an instrument that produces sound by vibration of air column.



- 1) What can be done to increase the vibrational frequency of flute? (2 marks)
- 2) Write two situations where music therapy is used. (2 marks)