

සියලු ම හිමිකම් ඇවිරිණි / முழுப் பதிப்புரிமையுடையது / All Rights Reserved

ශ්‍රී ලංකා විභාග දෙපාර්තමේන්තුව ශ්‍රී ලංකා විභාග දෙපාර්තමේන්තුව ශ්‍රී ලංකා විභාග දෙපාර්තමේන්තුව ශ්‍රී ලංකා විභාග දෙපාර්තමේන්තුව ශ්‍රී ලංකා විභාග දෙපාර්තමේන්තුව
இலங்கைப் பரீட்சைத் திணைக்களம் இலங்கைப் பரීட்சைத் திணைக்களம் இலங்கைப் பரීட்சைத் திணைக்களம் இலங்கைப் பரීட்சைத் திணைக்களம் இலங்கைப் பரීட்சைத் திணைக்களம்
Sri Lanka Department of Examinations, Sri Lanka Department of Examinations, Sri Lanka Department of Examinations, Sri Lanka Department of Examinations, Sri Lanka
ශ්‍රී ලංකා විභාග දෙපාර්තමේන්තුව ශ්‍රී ලංකා විභාග දෙපාර්තමේන්තුව ශ්‍රී ලංකා විභාග දෙපාර්තමේන්තුව ශ්‍රී ලංකා විභාග දෙපාර්තමේන්තුව ශ්‍රී ලංකා විභාග දෙපාර්තමේන්තුව
இலங்கைப் பரීட்சைத் திணைக்களம் இலங்கைப் பரීட்சைத் திணைக்களம் இலங்கைப் பரීட்சைத் திணைக்களம் இலங்கைப் பரීட்சைத் திணைக்களம் இலங்கைப் பரීட்சைத் திணைக்களம்
Department of Examinations, Sri Lanka Department of Examinations, Sri Lanka Department of Examinations, Sri Lanka Department of Examinations, Sri Lanka

අධ්‍යයන පොදු සහතික පත්‍ර (උසස් පෙළ) විභාගය, 2024
கல்விப் பொதுத் தராதரப் பத்திர (உயர் தர)ப் பரீட்சை, 2024
General Certificate of Education (Adv. Level) Examination, 2024

ගෘහ ආර්ථික විද්‍යාව I
மனைப் பொருளியல் I
Home Economics I

28 E I

පැය දෙකයි
இரண்டு மணித்தியாலம்
Two hours

Instructions:

- * Answer *all* the questions.
- * Write your **Index Number** in the space provided in the answer sheet.
- * Read the instructions given on the back of the answer sheet carefully.
- * In each of the questions **1** to **50**, pick one of the alternatives from (1), (2), (3), (4), (5) which is **correct** or **most appropriate** and mark your response on the answer sheet with a cross (x) in accordance with the instructions given on the back of the answer sheet.

1. What is the correct statement connected to colour combination?
 - (1) Mixing black to a colour increases the value.
 - (2) Darkness or lightness of a colour is the intensity.
 - (3) Mixing white to a colour decreases the value.
 - (4) Mixing red to green colour increases the value.
 - (5) Brightness or dullness of a colour is the intensity.
2. Which of the following features could be seen in construction of buildings according to modernism?
 - (1) Complexity of the buildings
 - (2) Construction with carvings
 - (3) Having different colour combinations
 - (4) Built on geometrical shapes
 - (5) High construction cost
3. Which of the following is **not** an accessory used in interior designing?
 - (1) Ponds
 - (2) Indoor plants
 - (3) Household appliances
 - (4) Waterfalls
 - (5) Indoor garden
4. Consider the following statements.

A – Electricity consumption could be minimized by fixing solar panels to a roof.

B – National museum is designed according to the European tradition.

C – Bauhaus in Germany is designed according to the ancient tradition.

D – Liberty plaza building is designed according to post modern tradition.

Out of these, the correct statement/s is/are

 - (1) A only.
 - (2) C only.
 - (3) A and B only.
 - (4) B and D only.
 - (5) all A, B, C and D.
5. Select the option which contains two polysaccharides.
 - (1) Amylose and Maltose
 - (2) Amylose and Sucrose
 - (3) Glycogen and Amylose
 - (4) Glycogen and Galactose
 - (5) Cellulose and Glucose

6. Which pair of food represents the protein complementation?
- (1) Mung kiribath and idli
 - (2) Imbul kiribath and dhosai
 - (3) Treacle hoppers and idli
 - (4) Imbul kiribath and mung kiribath
 - (5) Treacle hoppers and dhosai
7. Select the **incorrect** statement regarding the functions of protein.
- (1) Collagen is an important protein in maintaining the body upright.
 - (2) All the enzymes contain protein.
 - (3) Haemoglobin is a protein containing structure.
 - (4) Antibodies are of protein origin.
 - (5) Protein is the basic building block of all hormones.
8. Select the correct statement regarding vitamins.
- (1) Vitamin C reduces the risk of cancer.
 - (2) Vitamin E helps to absorb iron in food.
 - (3) Vitamin D deficiency leads to premature births.
 - (4) Vitamin B₉ can be obtained only by consuming animal food.
 - (5) Vitamin K is important as an antioxidant.
9. Select the pair of food which is abundant in dietary fiber.
- (1) Atta flour and potato
 - (2) Guava and kohila
 - (3) Tomato and atta flour
 - (4) Potato and kohila
 - (5) Guava and tomato
10. Select the correct statement regarding digestion of food.
- (1) Large intestine consists of jejunum and ileum.
 - (2) Water absorption mainly occurs in small intestine.
 - (3) There is an acidic medium in the large intestine.
 - (4) Pepsin and trypsin are present in the gastric juice.
 - (5) Digestion of food is an anabolic process.
11. Consider the following statements.
- A – Frequent antibiotic usage disturbs the production of vitamins in the alimentary canal.
- B – Alcohol consumption reduces the absorption of water soluble vitamins.
- C – Mental stress reduces the absorption of minerals.
- From these, the correct statement/s is/are
- (1) A only.
 - (2) A and B only.
 - (3) A and C only.
 - (4) B and C only.
 - (5) all A, B and C.
12. Select the option which correctly matches the nutrient and its symptom of deficiency.
- (1) Iron – poor appetite
 - (2) Iodine – decreased immunity
 - (3) Folic acid – delay in wound healing
 - (4) Zinc – disturbance in the intellectual development
 - (5) Magnesium – weakening of bones

13. Consider the following statements regarding overnutrition.

A – This is a form of malnutrition.

B – Consumption of food with high calories and low nutrition leads to this condition.

C – In this situation, excess energy deposits in the body as fat.

D – In this condition, the Body Mass Index (BMI) is above 30.

From these, the correct statements are

- (1) A, B and C only. (2) A, B and D only.
(3) A, C and D only. (4) B, C and D only.
(5) all A, B, C and D.

14. Consider the following diseases/conditions.

A – Hypertension

B – Heart diseases

C – Cancer

D – Mental stress

From these, the possible diseases/conditions for a man who has waist : hip ratio above 0.9 are

- (1) A and B only. (2) B and C only.
(3) A, B and C only. (4) A, B and D only.
(5) All A, B, C and D.

15. Which of the following is a symptom of vitamin A deficiency?

- (1) Decreased memory (2) Increased risk of respiratory tract infections
(3) Getting tired quickly (4) Mental lethargy
(5) Paleness of the body

16. Select the correctly matched option of the non communicable disease and the nutritional advice for its control.

- (1) Gastritis – having a habit of taking 3 meals per day
(2) Heart disease – consumption of red meat daily
(3) Constipation – limiting the consumption of spicy food
(4) Hypertension – increased intake of food high in potassium
(5) Stroke – consumption of fresh milk

17. The two additives amyl acetate and propylene used in food processing are respectively

- (1) a flavouring agent and an emulsifying agent.
(2) a fragrant agent and a seasoning agent.
(3) a seasoning agent and a softening agent.
(4) a fragrant agent and an emulsifying agent.
(5) a softening agent and a flavouring agent.

18. Consider the following statements.

A – The food is cooked with less liquid.

B – Cooking is done at 100°C.

C – Cooking requires more time.

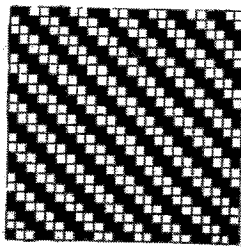
D – During cooking, heat is transferred by conduction and convection.

From these, the statements regarding stewing are

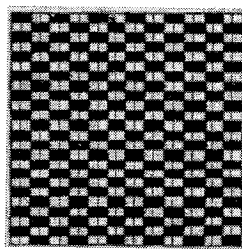
- (1) A and B only. (2) A and C only. (3) B and D only.
(4) A, C and D only. (5) B, C and D only.

19. The steps followed when preparing the choux pastry are
- (1) mix flour and fat, then add eggs.
 - (2) heat fat, mix eggs, then add flour.
 - (3) beat eggs, mix fat, then add flour.
 - (4) mix eggs with fat, then add flour.
 - (5) heat fat, mix flour, then add eggs.
20. What is the bacterial species which causes food poisoning?
- (1) *Clostridium botulinum*
 - (2) *Salmonella typhosa*
 - (3) *Vibrio cholera*
 - (4) *Helicobacter pylora*
 - (5) *Escherichia coli*
21. Following are some facts regarding food preservation.
- A – Pasteurised food should be stored at a temperature below 10°C.
B – During rapid deep freezing ice cubes are formed in the food.
C – Irradiation could be applied for packaged food.
D – Spray drying is used to dry liquid food only.
- From these, the correct ones are
- (1) A and B only.
 - (2) A and C only.
 - (3) B and D only.
 - (4) A, C and D only.
 - (5) B, C and D only.
22. The foods which are preserved by using nitrites and nitrates are
- (1) jam and dried vegetables.
 - (2) cheese and meat products.
 - (3) jam and fruit pulp.
 - (4) cheese and dried vegetables.
 - (5) fruit pulp and meat products.
23. According to the classification of commercial stitches, under which stitch type does the lock stitch is classified?
- (1) 100
 - (2) 200
 - (3) 300
 - (4) 400
 - (5) 500
24. Select the **incorrect** statement regarding commercial stitches.
- (1) Blind stitch is used in fixing lace, elastic and ribbon.
 - (2) In the zig-zag lock stitch, both sides of the fabric appear same.
 - (3) Hand stitch is used to join two pieces of fabric.
 - (4) Over edge chain stitch belongs to the stitch type 600.
 - (5) Lock stitch consists of the two strands, needle thread and bobbin thread.
25. Which of the following types of fibers include the fibers Kapok, Glass and Aramid respectively?
- (1) Plant based, mineral based and special
 - (2) Regenerated, special and synthetic
 - (3) Plant based, regenerated and mineral based
 - (4) Plant based, special and regenerated
 - (5) Mineral based, synthetic and special

26. Following are diagrams of two weaves.



A



B

A and B respectively are

- (1) matt weave and sateen weave.
 - (2) regular twill weave and weft rib weave.
 - (3) satin weave and plain weave.
 - (4) regular twill weave and matt weave.
 - (5) satin weave and weft rib weave.
27. Select the correct statement regarding finishes given to fabrics.
- (1) Anti bacterial finish is given by applying an Aluminium coating.
 - (2) Only cotton fabrics could be subjected to sanforization.
 - (3) Passing a fabric over a flame, burn the protruded fibers.
 - (4) Dipping in enzymes and then washing give a roughness to the fabric.
 - (5) Comfort finish gives stretchable and a shiny effect to the fabric.
28. Select the **incorrect** statement from the following.
- (1) A cross band could be used to finish a straight edge.
 - (2) In desizing acids or enzymes are added to water.
 - (3) Fabrics with satin weave are soft and smooth.
 - (4) Hydrogen peroxide is used to reduce the darkness of dark coloured cotton garments.
 - (5) Polyester fabrics get easily decayed by the exposure to sunlight.
29. When sewing the short skirt, first to be sewn is the
- (1) side seam.
 - (2) waist darts.
 - (3) front waist.
 - (4) zipfastener.
 - (5) centre back seam.
30. Which of the following statements is correct regarding surface decorating methods?
- (1) In printing, the entire fabric is dipped in the dye.
 - (2) In roller printing, the same roller could be used to apply different colours.
 - (3) Stitching around the motif of a printed fabric is appliqué work.
 - (4) In stencil printing the stencil is kept on the fabric and the dye is allowed to pass through it.
 - (5) The same dye could be used for cellulose, protein and synthetic fabrics.
31. Select the **incorrect** statement regarding communication.
- (1) In non verbal communication signs are used to express different ideas.
 - (2) In written communication it is difficult to study the receiver's gestures.
 - (3) Minimum liking for interpersonal relationships is not a barrier for proper communication.
 - (4) Ease to restudy is an advantage in written communication.
 - (5) The communication done while engaging in another activity is less effective.

32. A feature of verbal communication is

- (1) the difficulty in confirming the message correctly.
- (2) the ease of reusing through filing.
- (3) the possibility of correcting the unclear parts of the message.
- (4) the possibility of proving the message later as a witness.
- (5) the possibility of conveying the message in a language easy for the communicator.

33. Following are some statements regarding leisure and recreation.

A – Active leisure activities are divided into three categories.

B – Leisure disturbs a proper life style.

C – In selecting recreational activities for leisure, human behaviour should be considered.

D – Recreational activities are successful with the improvement of technology.

From these, the correct statements are

- | | | |
|-------------------|----------------------|-------------------|
| (1) A and B only. | (2) A and D only. | (3) B and C only. |
| (4) C and D only. | (5) A, C and D only. | |

34. Select the option having **only** social recreational activities.

- (1) Games, parties, physical exercises
- (2) Parties, trips, banquets
- (3) Carpentry, cricket, batik
- (4) Drawing, competitions, physical exercises
- (5) Trips, drawing, banquets

35. What is the true statement regarding tourism?

- (1) Domestic tourism is touring of the residents in the same country as outsiders.
- (2) Taking large organised groups to touring places is alternative tourism.
- (3) Wild life photographing and hiking are two activities included in the nature tourism.
- (4) Farm-stay and buying products from the farm itself are included in the Ecotourism.
- (5) Gaining learning experiences outside the classroom, contributing in the welfare activities are objectives of Educational tourism.

36. Select the option which includes examples for natural, man made and man controlled tourist attractions respectively.

- (1) Ridiyagama safari park, Unawatuna beach, Dalada perahara
- (2) Museum, Pinnawala elephant orphanage, Hot water springs
- (3) Dunhinda waterfall, Puppetry, Udawalawa sanctuary
- (4) Unawatuna beach, Kumana bird sanctuary, Lovamahapaya
- (5) Ridiyagama safari park, Avukana Buddha statue, Bopath falls

37. Following are some statements regarding the household water supply.

A – Drinking water contains chemicals such as Cadmium, Fluoride and Chromium.

B – A unit of water is one cubic meter or 1000 litres of water.

C – From Sri Lanka's total water consumption, about 15% is utilized for household and other activities.

D – The water that is driven from the septic tank to a soakage pit could be used for outdoor plants.

From these, the correct statements are

- | | | |
|----------------------|----------------------|----------------------|
| (1) A and C only. | (2) B and C only. | (3) A, B and D only. |
| (4) A, C and D only. | (5) B, C and D only. | |

38. Select the **incorrect** statement regarding the household electricity supply.
- (1) The overload circuit breaker and electric meter belong to the electricity supplying institute.
 - (2) The live wire and the neutral wire are connected to the isolater.
 - (3) In old houses, the fuse was used instead of the miniature circuit breaker.
 - (4) The switches in the lamp circuit are connected to the live wire.
 - (5) In a plug base, the earth wire is connected to its left.
39. What is the correct statement about electrical energy?
- (1) The direct current is obtained from the main electricity supply.
 - (2) The electric power of compact flouroscent lamp (CFL bulbs) is more than that of incandescent bulbs.
 - (3) The unit of measurement of electric current is Ohm.
 - (4) Insulators are used to prevent the leakage of electric current from a conductor.
 - (5) The frequency of the main electricity is 100 Hertz (Hz).
40. In a house, an electric iron of 1500 W is used for 30 minutes daily. How many electric units are consumed during one week?
- (1) 5.12 kWh (2) 5.25 kWh (3) 5.46 kWh (4) 5.55 kWh (5) 5.75 kWh
41. Select the correct statement regarding prebiotics and probiotics.
- (1) Dairy products contain prebiotics and probiotics.
 - (2) Prebiotics is a species of symbiotic bacteria.
 - (3) Dietary fiber is important for the growth of probiotics.
 - (4) Banana and Leeks contain probiotics.
 - (5) Prebiotics strengthens the human immune system.
42. Consider the following facts regarding misuse of resources.
- A – Storage of excess water
B – Generation of renewable energy sources
C – Greenhouse effect
D – Increased use of hybrid vehicles
- From these, the bad effect/effects is/are
- (1) C only.
 - (2) A and B only.
 - (3) A and C only.
 - (4) B and D only.
 - (5) B, C and D only.
43. What is the correct statement regarding the values of food foot prints?
- (1) This value of vegetables is higher than that of fruits.
 - (2) This value of cereals is lower than that of milk.
 - (3) This value of fruits is higher than that of oil spreads.
 - (4) This value of fish is lower than that of cereals.
 - (5) This value of chicken is higher than that of milk.
44. What is a step that could be taken to minimize the emissions when cooking food?
- (1) use more liquid in cooking
 - (2) cooking in an open vessel
 - (3) cooking with the lid closed
 - (4) cooking in a large vessel
 - (5) cooking in metallic vessels on gas cookers

45. According to Hurlock, which of the following age groups was identified as the transitional stage?
- (1) 10-12 years (2) 12-14 years
(3) 15-16 years (4) 16-18 years
(5) 19-21 years
46. Consider the following statements regarding the development during adolescence.
- A – Show imbalance in the emotional development.
B – Tend to change rules and regulations in favour of social life.
C – In girls, skeletal maturation occurs till 19 years of age.
- From these, the correct statement/s is/are
- (1) A only. (2) A and B only.
(3) A and C only. (4) B and C only.
(5) all A, B and C.
47. How should the parents act regarding the development of self concept in children?
- (1) develop high expectations in education
(2) compare children
(3) interfere in problem solving
(4) influence in decision making
(5) look at achievements of children equanimously
48. What are the physical features that are shown by an individual having mental pressure?
- (1) unsettledness and shock
(2) grief and lethargy
(3) unsettledness and panting
(4) shock and grief
(5) panting and lethargy
49. What features should an entrepreneur have?
- (1) liking to accept new ideas and learning through experiences
(2) liking to be changed and thinking more on present
(3) accepting the responsibilities in both win and defeat and respecting old ideas
(4) acting on own decisions and limiting work
(5) learning through experiences and not expecting higher targets
50. Consider the following facts.
- A – Resources should be equally distributed.
B – The processes to be upgraded should be identified and attending towards them as much as possible.
C – Should simplify all the tasks in the business.
D – The internal and external environment of the business should be improved.
- From these, the fact/facts to be followed to improve the productivity of the business is/are
- (1) A only. (2) B only. (3) C only.
(4) A and C only. (5) B, C and D only.

* * *

ශ්‍රී ලංකා විභාග දෙපාර්තමේන්තුව ශ්‍රී ලංකා විභාග දෙපාර්තමේන්තුව ශ්‍රී ලංකා විභාග දෙපාර්තමේන්තුව ශ්‍රී ලංකා විභාග දෙපාර්තමේන්තුව ශ්‍රී ලංකා විභාග දෙපාර්තමේන්තුව
இலங்கைப் பரீட்சைத் திணைக்களம் இலங்கைப் பரීட்சைத் திணைக்களம் இலங்கைப் பரීட்சைத் திணைக்களம் இலங்கைப் பரීட்சைத் திணைக்களம் இலங்கைப் பரීட்சைத் திணைக்களம்
Department of Examinations, Sri Lanka Department of Examinations, Sri Lanka Department of Examinations, Sri Lanka Department of Examinations, Sri Lanka Department of Examinations, Sri Lanka
ශ්‍රී ලංකා විභාග දෙපාර්තමේන්තුව ශ්‍රී ලංකා විභාග දෙපාර්තමේන්තුව ශ්‍රී ලංකා විභාග දෙපාර්තමේන්තුව ශ්‍රී ලංකා විභාග දෙපාර්තමේන්තුව ශ්‍රී ලංකා විභාග දෙපාර්තමේන්තුව
இலங்கைப் பரීட்சைத் திணைக்களம் இலங்கைப் பரීட்சைத் திணைக்களம் இலங்கைப் பரīட்சைத் திணைக்களம் இலங்கைப் பரīட்சைத் திணைக்களம் இலங்கைப் பரīட்சைத் திணைக்களம்
Department of Examinations, Sri Lanka

අධ්‍යයන පොදු සහතික පත්‍ර (උසස් පෙළ) විභාගය, 2024
கல்விப் பொதுத் தராதரப் பத்திர (உயர் தரப் பரீட்சை, 2024)
General Certificate of Education (Adv. Level) Examination, 2024

ගෘහ ආර්ථික විද්‍යාව **II**
மனைப் பொருளியல் **II**
Home Economics II

28 E II

පැය තුනයි

மூன்று மணித்தியாலம்
Three hours

අමතර කියවීමේ කාලය - මිනිත්තු 10 යි
மேலதிக வாசிப்பு நேரம் - 10 நிமிடங்கள்
Additional Reading Time - 10 minutes

Use additional reading time to go through the question paper, select the questions you will answer and decide which of them you will prioritise.

Instructions:

* Answer six questions including question No. 1.

- Mention **two** types of lines which depict 'beauty' and 'calmness' respectively.
 - Name **two** alternative energy sources.
 - Write a chemical test which is suitable to identify starch in food.
 - Name **two** disease conditions caused due to calcium deficiency.
 - Readymade garment industry is advantageous to Sri Lanka. Give **two** reasons.
 - Write the **two** main steps in the manufacture of synthetic fibers.
 - Mention **two** factors which affect the use of leisure for recreation.
 - Define the concept 'Green Consumer'.
 - Name **two** categories of ethics which are important in developing interpersonal relationships and write **one** example for each.
 - Write **two** characteristics that show the abstract thinking ability during adolescence.

(02 × 10 = 20 marks)
- What is the type of landscape suitable for arranging the land of an office?
State the reason. (02 marks)
 - Write **four** steps to be taken for the economic management in designing a house. (04 marks)
 - Explain with examples how
 - Emphasis
 - Proportion
 could be shown in interior designing. (04 marks)
 - Explain the
 - energy transfer and
 - operation process of the following electrical appliances.
 - Washing machine
 - Electric cooker
 - Microwave oven(06 marks)

(Total 16 marks)
- Name **two** polyunsaturated fatty acids. (02 marks)
 - It is important to add fish in the diet. Give **four** reasons. (04 marks)
 - Plan a day's menu for a patient suffering from diabetes. (05 marks)
 - Explain the factors affecting malnutrition. (05 marks)

(Total 16 marks)

4. (i) State **three** principles of food preservation. (03 marks)
(ii) Explain 'Rancidity' of fatty food. (05 marks)
(iii) Write short notes on
(a) Vacuum packaging
(b) Use of glass as a packaging material (08 marks)
(Total 16 marks)
5. (i) State the smell which evolve when burning linen, silk and nylon fibers respectively. (03 marks)
(ii) There are three ways of completing the sewing of garments in the readymade garment industry. Write the **three** ways. (03 marks)
(iii) Describe 'Tie and dye' method, which done using two colours. (05 marks)
(iv) Explain the process followed when packing shirts. (05 marks)
(Total 16 marks)
6. (i) State **two** facts to pay attention in sustainable resource consumption. (02 marks)
(ii) Name **four** effects of global warming and explain **two** of them. (04 marks)
(iii) Explain
(a) boarding facilities provide for tourists in Sri Lanka. (04 marks)
(b) Supporting services related to tourist industry. (06 marks)
(Total 16 marks)
7. (i) Identify 'puberty'. (02 marks)
(ii) Write **four** features shown by an adolescent having mental balance. (04 marks)
(iii) Explain the vocational problems faced by the adolescent. (05 marks)
(iv) Discuss the influence of peer group regarding the development of adolescents. (05 marks)
(Total 16 marks)
8. Write short notes on **four** of the following topics.
(i) The elements affecting the value of a design
(ii) Food practices important in managing obesity
(iii) Sewing methods used in designing of household linen
(iv) Holiday packages introduced for tourists
(v) Moral development during adolescence (04 × 4 = 16 marks)

* * *